

## Fishing rules for foreigners in the Tana watershed 2025

We have gathered the fishing rules based on juridic documents for foreigners fishermen fishing in Tana in one document, to make these rules more accessible for the fishermen. This document is as precise as possible, but under any juridic doubt, the Norwegian law with the three official fishing regulations for the different parts of the watershed are the ones that applies. For the border ([link](#)). For the lower part ([link](#)). For the tributaries ([link](#))

**In 2025 is all fishing after salmon and migratory arctic charr forbidden. Eventual bicatch must be released carefully.**

There are to main categories of fishing licenses: Licenses for fishing from boat and shore after sea-trout in the estuary, and licenses for fishing after resident fish in the rest of the watershed (in areas allowed for fishing). The licenses are cheaper for teenagers (13 to 17 yrs old). Kids under 13, can fish for free, but need a license to make sure their gears get disinfected and in order to report their catch. Licenses cannot be acquired on internet and needs to be acquired at a local delivery place, in order to make sure disinfection of the gears is done. Look down this page to find the list of the local license dealers:

<https://tanafisk.no/fiskekort/kiop-fiskekort/>

Make sure to report the catch of every species you catch on your account on <https://tana.lakseelv.no> and don't forget to end your license for the fishing period.

For fishing after sea-trout it is also mandatory to get the state's fishing fee:

<https://fiskeravgift.miljodirektoratet.no>

### Disinfection of the gears

All gear used incl. fishing equipment, boat, waders, ... must be dried by yourself and disinfected at the local license dealer. This also include after use in other river in Finnmark county. Background for both drying and disinfecting is to make sure you get rid of both fish's pathogens (disinfection), but also drying for invasive aquatic plant species such as the Canadian waterweed *Elodea canadensis* which is invading up north and get closer and closer to our watershed (ex. Torneälven).

### Catch report

The report of the catch is mandatory by law. Just follow the guidelines for the report on

<https://tana.lakseelv.no/>. If you have license for several days, please take note of the following in order to remember for the official report:

1. Fishing area
2. Dates of catch and no catch
3. Fish species, sex, length and weight (if the fish is released, only take note of the specie and assume the size if you can).
4. Remember to end your license straight after ended season.

The catch report has to be delivered latest within the 1. of September of the same season. For the catch from ice-fishing in the few allowed areas , the report has to be delivered latest on the 1. mai of 2026.

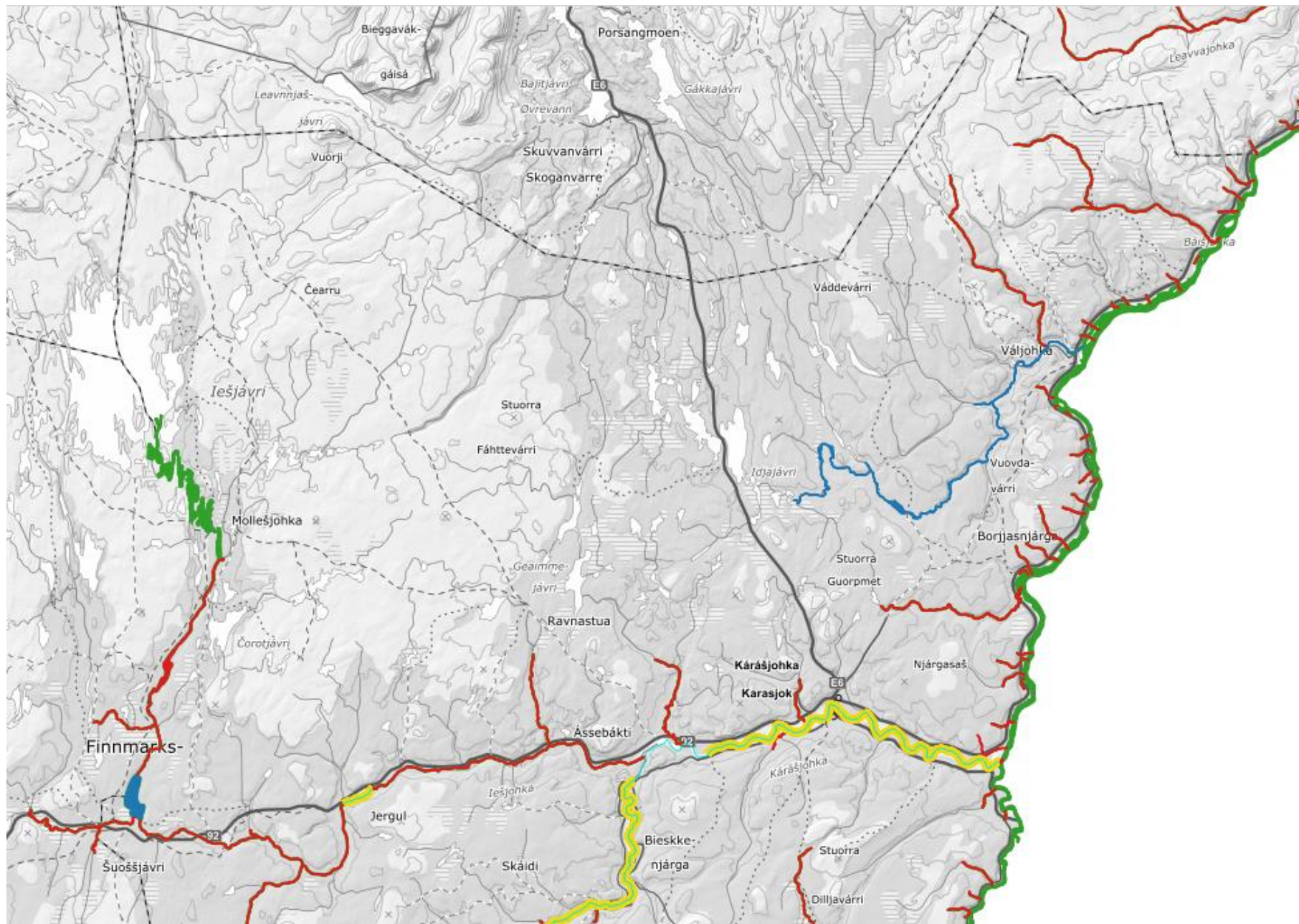
Catch of escaped farmed salmon or rainbow trout have to be reported immediately to our office: <https://tanafisk.no/kontakt/> in order to make sure that measures are taken as fast as possible.

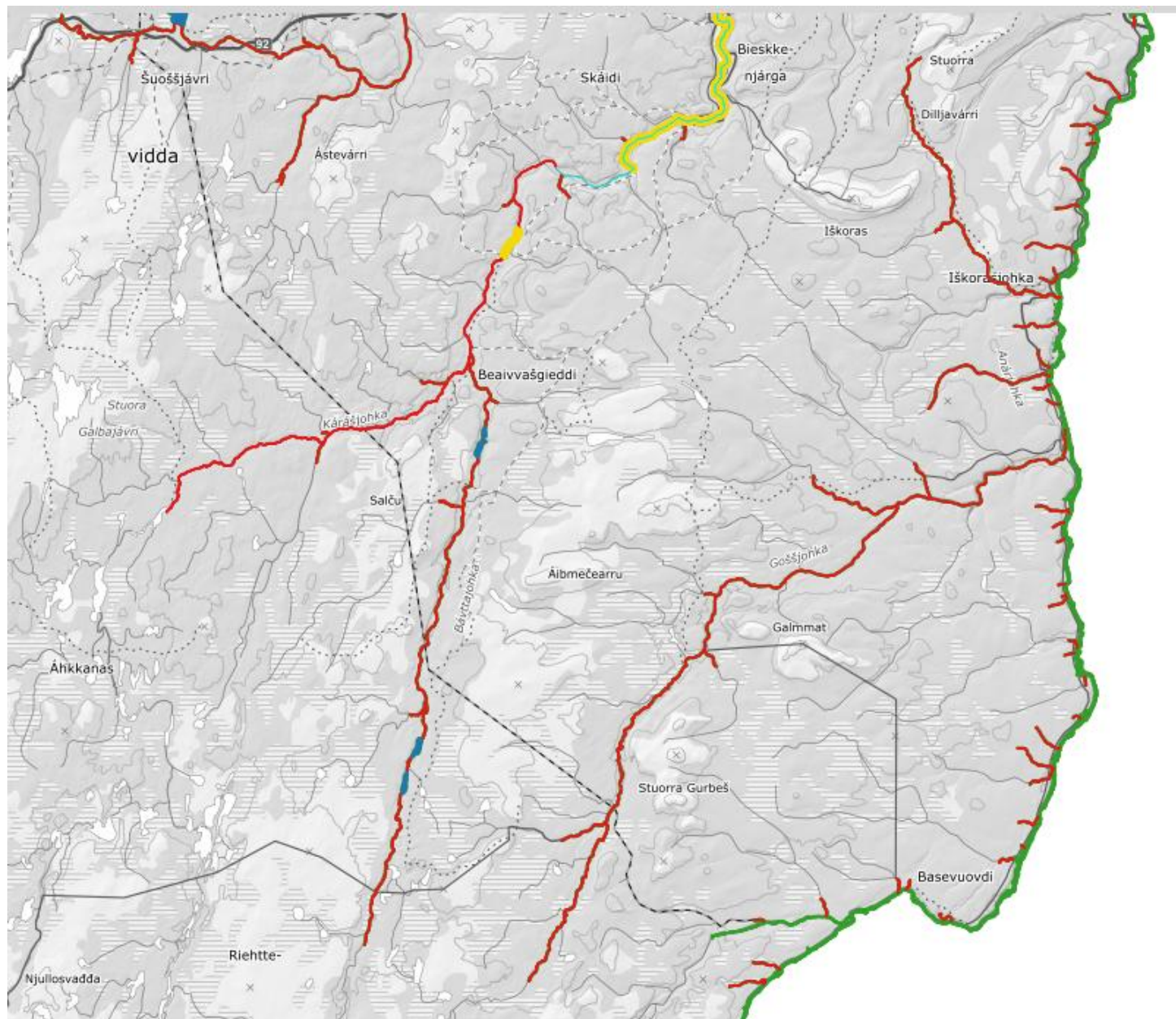
Missing catch report will be charged with 300 kr fee on your license for next season.

Open for fishing  
 Closed for fishing  
 Resident fish areas (also open for ice fishing)  
 Only for small mesh sized nets (locals only)  
 Open for children and teenager (locals only)

The map displays the Tana region, including areas like Ifjord, Idjavuotna, Vestertana, and Roavve. It shows various fishing zones and locations, with labels for specific areas and towns. The legend indicates different fishing regulations: green for open fishing, red for closed fishing, blue for resident fish areas, cyan for small mesh nets, and yellow for children and teenagers.







## IMPORTANT

Note that the map in some areas miss forbidden sones 50 m upstream tributaries and 100 – 200 m downstream the tributaries. See the paragraph concerning the forbidden sones on page 7.



## Fishing season

RIVER	FISHING SEASON FOR FOREIGNERS
<b>Tana river- lower part</b> (from the finish border to the estuary)	15.06- 31.07
Area Biehtárjohka- estuary	Resident fish: 15.06- 31.07 Sea trout: 23.06- 31.07
<b>Tana river border with Finland</b>	10.06- 10.08
<b>Harrelva</b>	Closed
<b>Golggotjohka</b>	Closed
<b>Máskejohka</b>	Closed
Geasis/ Sommerelva	Closed
Uvjalátnjá/ Dunkrattelva	Closed
Ciikojohka	10.06- 10.08
Máskeluoppal	Closed
Máscejávri og Vuoksajávri	Open year-round
<b>Luovttejohka/ Luftjok</b>	Grayling: 10.06- 10.08/ Trout: closed
<b>Ruossajohka/ Korselva</b>	01.07- 10.08
<b>Buolbmátjohka/ Polmakelva (norsk del)</b>	Open year-round
Oddafávli	Open year-round
Buolbmátjavri/ Polmakvannet	Open year-round
<b>Lákšjohka</b>	Closed
Gurtejohka	Closed
Gurteluoppal og Soavveljávri	Open year-round
Deavkkehanjohka	Closed
Gárppejohka	Closed
Leavvajohka	Closed
Báišjohka	Closed
<b>Váljohka</b>	
Váljohka innsjø	Open year-round
Váljohka elv	10.06- 10.08
Ástejohka	Closed
<b>Kárášjohka</b>	Closed
Geaimmejohka	Closed
Bávttajohka	Closed
<b>Iešjohka og sideelver</b>	Closed
Unntak: Šuoššjávri	Open year-round
Unntak: Luoppal fra Iešjávri- Mollešjohka	Open year-round
<b>Anárjohka og Skiehččanjohka (grense)</b>	10.06- 10.08
Iškorasjohka	Closed

Fishing is forbidden from Sunday 18 o'clock to Monday 18 o'clock. Excepted for the lakes 200 m away from the outlet and inlet. Same exception for the estuary area.

## Forbidden areas for fishing

At the outlet of tributaries on the tributaries of Tana	At the outlet of the tributaries in the Tana river, lower part	At the outlet of the tributaries in the Tana river, border part	Confluence Kárášjohka – Anárjohka
50 m upstream, and 100 m downstream across the river	50 m upstream, and 200 m downstream and 200 m across the Tana river	50 m upstream, and 100 m downstream to the middle deep hole (border)	50 m upstream in both rivers, and 200 m downstream after the confluence

- The following areas are forbidden for fishing, marked on map ([link](#)) and on the shore.
  - Skiippagurrastryket/ Guivvašguoika
  - Seidastryket/Sieiddáguoika
  - Lower Storfossen – Bildán across the river
  - Galbajohka – Veahčajohtjálbmi from the Norwegian side to the border (mid river deep hole)
  - Borsejohka – Leavvajohnjálbmi across the river

## Allowed gears

In the tributaries of Tana, fishing is allowed from the shore only, with flies without extra weight than the hook itself and without bobber. Maks hook size is 6.

In the Tana on the border stretch and lower part (after the border) it is allowed to fish from shore only, with fly rod (max strength of line #6), with only one fly with a simple hook of max hook size of 8. The tippet must not exceed 0,25 mm in diameter. Only floating lines are allowed. Childrens up to 16 yrs. old can use a normal rod with a bobber and a fly and line as described above.

In the estuary, from the 23 of June until the 31 of July, fishing is allowed from boat (borrowed from a local with a license plate for the watershed) and from shore with flies, lures or wobbler suitable for sea trout fishing.

Generally: It is forbidden to use shrimps, fish or worm as baits. Excepted for the estuary area, where worms are allowed.

### Summary for gears regulations

	Max line diameter	Max hook size	Lures	Max flyrod strength	Wobbler	Mark
<b>Tributaries</b>	none	Nr. 6	Not allowed	None	Not allowed	Not allowed
<b>Border stretch</b>	0,25 mm	Nr. 8	Not allowed	# 6	Not allowed	Not allowed
<b>Lower part</b>	0,25 mm	Nr. 8	Not allowed	# 6	Not allowed	Not allowed
<b>Estuary 23.06-31.07</b>	none	None	Allowed	None	Allowed	Allowed

### Fishing from boats

Fishing from boat is only allowed for the locals, excepted for fishing in the estuary area, where foreigners can borrow a registered boat from a local. Only locals can register a boat with a license plate for the watershed.

Locals, in that matter, means people living permanently and registered as such in Tana, Karasjok municipalities or parts of Kautokeino along the Tana watershed.

It is not allowed to hanker your boat while fishing.

Every person participating in the fishing in the boat need a fishing license, including the one rowing.